

COLOUR-MIX®

Concentrato colorante, fibrorinforzato per pavimenti in Sassoitalia® / Pre-blended, coloured, fibre-strengthened concentrate for Sassoitalia® / Adjuvant concentré, coloré, fibre-renforcé pour Sassoitalia®.

Tipologia di cemento usato
Used cement type
Type de ciment utilisé

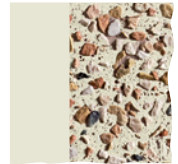
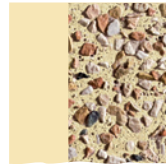
100% bianco
100% white
100% blanc

50% bianco e 50% grigio
50% white & 50% grey
50% blanc et 50% gris

100% grigio
100% grey
100% gris

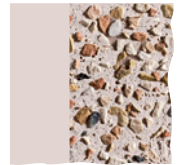
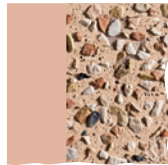
Paglia

Art. COLOURMIX-PAG



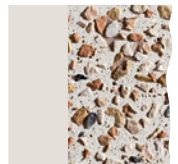
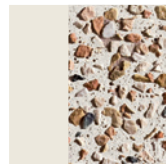
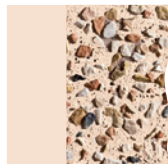
Cammello

Art. COLOURMIX-CAM



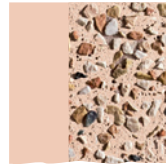
Sabbia

Art. COLOURMIX-SAB



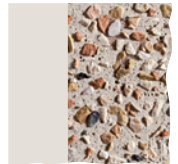
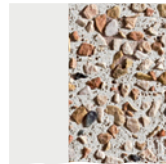
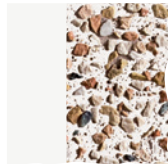
Terra Toscana

Art. COLOURMIX-TER



Neutro

Art. COLOURMIX-NEU



Colour-mix® conferisce alla pavimentazione il colore di base. L'effetto finale può variare in base al cemento utilizzato (bianco o grigio) e alla combinazione Colour-mix® e graniglia utilizzata.

Colour-mix® is the colouring admixture to the Sassoitalia paving system. The type of cement and the combination of Colour-mix® and aggregate determine the final result.

Colour-mix® donne au béton sa couleur de base. Le résultat final peut varier selon le ciment choisi (blanc ou gris) selon le mélange Colour-mix® et du type de Cailloux choisi.